

# Film Studies A-level Eduqas Exam Board



## Why Study Film Studies?

Film has been a huge part of our society for over a hundred years, from the first black & white silent films, to the latest films which employ the use of technology to bring a whole new dimension and experience to modern audiences.

Films can be viewed as works of art, as the writer and director share their ideas as a visual representation to viewers across the world. It is a way of sharing and expressing their views, or ideas, on the matter or topics raised within the film.

Our students thoroughly enjoy this subject and our results show excellent progress and a strong level of engagement. This course suits students who like to work in a creative, practical and analytical way.

We are well equipped with HD cameras and our own large green screen. Students taking A-Level Film Studies are given many opportunities to enrich their learning, on trips e.g. to the IMAX cinema, talks and workshops, e.g. at the BFI (British Film Institute) and to experience the creative production involved in the industry e.g. the making of the Harry Potter Films at The Warner Brothers Tour in North London.

We also have strong links with local professional film makers who offer career advice and work experience.

## Assessment Structure

### Component 1: Varieties of film and filmmaking 35%

Written Exam 2 hours 30 mins (6 films)

Students must answer one question from each of the three sections. There will be a choice of two questions in each section.

Section A: Hollywood 1930-1990 (comparative study), 40 marks

Section B: American film since 2005 (two-film study), 40 marks

Section C: British film since 1995 (two-film study), 40 marks

### Component 2: Global filmmaking perspectives 35%

Written Exam 2 hours 30 mins (5 films)

Students must answer one question from each of the four sections.

There will be a choice of two questions in each section.

Section A: Global film (two-film study), 40 marks

Section B: Documentary film, 20 marks

Section C: Film movements – Silent cinema, 20 marks

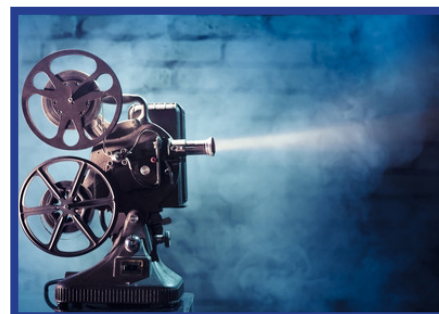
Section D: Film movements – Experimental film (1960-2000), 20 marks

### Component 3: Production 30%

Practical coursework

Students must submit the following for assessment:

- production (40 marks)
- evaluative analysis (20 marks)
- production coversheet, including the list of short films studied, authenticated by teacher and learner.



## Possible Career Pathways:

- Film Directors
- Film Producers
- Editors
- Screenwriters
- Advertising
- Events Management
- Marketing
- Public Relations

## Advised Entry Requirements:

Level 5 in GCSE English , GCSE Media Studies or GCSE Drama.

## Specification Link

<https://www.eduqas.co.uk/qualifications/film-studies/as-a-level>